

5000H Delimber Debarker Chipper

The 5000H produces top quality chips with the flexibility of chipping at the fiber source.

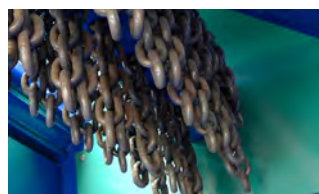


The 5000H with an end load spout.



The IQAN Control System Features A Large Display

The large display provides information to make chips more efficiently. On-screen maintenance instructions and self-diagnostics features increase your up-time.



Easy-to-Service Chain Flails and Replaceable Wear Liners

Upper and lower chain flails strip bark and limbs from the stems, replaceable UHMW wear liners protect the flail housing sidewalls.



Two chipper disc and knife systems available

Peterson disc chippers come with three or four pocket, 66" (167 cm) diameter chipper discs with traditional babbitted knife systems, or Key Knife™ systems.



A high visibility, weatherized cab meets OSHA Standards

Ergonomic joystick controls provide precise control of the two-section knuckle-boom log loader. End loading or top loading spouts are available.

The Peterson 5000H Delimber Debarker Disc Chipper produces high quality low bark content chips for wood pulp and pellets, processing whole trees in one continuous operation. Equipped with a large feed throat, the 5000H can accept up to a 23 inch (56 cm) diameter single tree or multiple smaller stems.

The 5000H can be configured with a three or four pocket disc, with several optional sheave sizes to make precisely the chip you need. The standard three-pocket disc produces chips from 5/8 to 1 1/4 inches (16–32 mm) long, while

the optional four-pocket disc produces chips from 1/2 to 1 inches (13–25 mm) long. Chipping production rates up to 100 tons (90 tonnes) per hour can be achieved depending on chip size and wood characteristics.

Peterson's heavy-duty 66 inch diameter, 4 3/4 inch thick (168 x 12 cm) chipper disc has replaceable 1/2 inch (13 mm) wear plates. Traditional babbitt-type knives or Key Knife components are available.

The Tier II C27 and C32 Caterpillar engines are more fuel-efficient than previous engines of equivalent power.

The adaptive cooling system adjusts the fan speed to match cooling requirements. Fuel cost savings can be significant over the life of the machine.

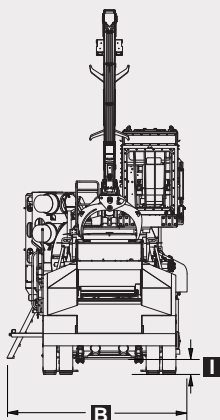
Since 1981, Peterson has specialized in the developing of delivery and processing equipment that turns low-grade organic materials into high value products.



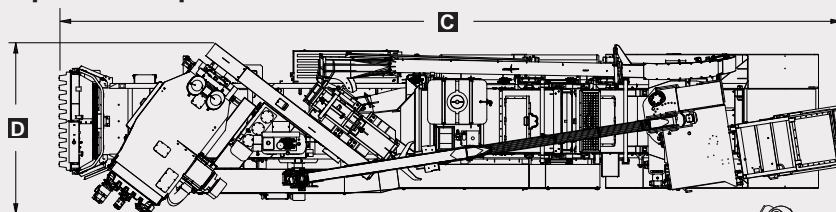
Peterson
an Astec Industries Co.

5000H Drawings

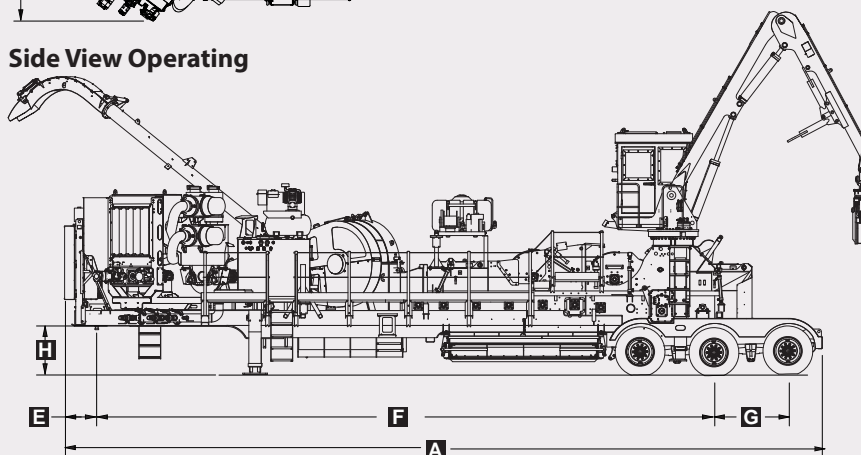
**Back View
Operating
(Spout Excluded)**



Top View Transport



Side View Operating



5000H Specifications

Dimensions

A Length from Bumper to Bumper	51'-3 1/4" (1563 cm)
B Operating Width	11'-8 1/2" (357 cm)
C Travel Length	53'-5 1/2" (1630 cm)
D Travel Width	11'-7 1/4" (354 cm)
Travel Height (Not shown)	13'-6" (411 cm)
E Front to 5th Wheel	2'-2 1/4" (1271 cm)
F 5th Wheel to Center Axle	41'-8 1/2" (1271 cm)
G Axle Spacing	60" (152 cm)
H 5th Wheel Height	4'-1 1/2" (126 cm)
I Ground Clearance (with standard bark pusher)	13" (33 cm)

Weights

Tri-Axle Weight	59,960 lbs (27 197 kg)
5th Wheel Weight*	45,000 lbs (20 412 kg)
Total Weight*	103,500 lbs (46 947 kg)

*Weights are approximate, based on a 3 flail long spout machine

Powertrain

Engine	Caterpillar C27 or C32 Tier II
Horsepower	C27 @ 950 hp (708 kW) or 1050 hp (783 kW) C32 @ 950 hp (708 kW), 1125 hp (839 kW) or 1200 hp (895 kW)
Clutch	PT Tech HPT0 15
Fuel Tank Capacity	375 gal (1420 L)
Hydraulic Tank Capacity	320 gal (1211 L)

Delimber/Debarker

Dual Horizontal Flail Drums	78 Chain Link Capacity
Dual Feed Rolls with Floating top Rolls—Debarker and Chipper	
7 Powered Lower Feed Rolls	
Side Discharge Bark Mover	10' x 21" (305 cm x 45 cm)
Variable Flail Speed, adjustable from cab	

Scan with your smartphone
to see a video of the 5000H



Chipper

Heavy Duty Three or Four Pocket Chipper Disc	66" (168 cm) diameter
Babbitt Knife or Key Knife System	
Top or End Loading Hydraulic Swivel Chip Spouts	

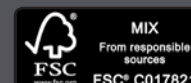
Log Loader

Hydraulic two-section Knuckle Boom	26'-10" (818 cm)
Continuous Rotation Grapple with Heel Rack	42" (107 cm)
Two Lever Electronic Joystick Controls	
Enclosed Weatherized Operator's Cab	
Pressurized Cab with Air Conditioner	
Lift Capacity	11,851 lbs (5376 kg) at 15' (457 cm)

Optional Equipment

Large Capacity Bark Pusher	10' wide x 24" (305 cm x 61 cm)
High Rotation Long Spout	
Extended Frame	2' (60 cm) longer
Electric or Diesel Fired Cold Weather Kits	
Auxiliary Air Compressor	
Fire Suppression System (manual and automatic)	
Canadian Travel Harness	
Optional Lower Flail Positions	
Lower and Upper Chain Curtain	
Third Flail	
Black Urethane Flail Liners	
Night Operation Lights	

Specifications subject to change without notice.



PETERSON an Astec Industries Company

PO Box 40490 • Eugene, OR 97404 • Tel 800.269.6520 Fax 541.689.0804 • www.petersoncorp.com

