

CH/CHF - Single acting hollow cylinders made of steel

CH/CHF cylinders can be used for both push and pull operations thanks to the through-hole. For example, by inserting a rod through the cylinder, the push force can also be used for pulling operations.

CH/CHF cylinders have a capacity of up to 51 t and because CH/CHF cylinders are very compact in size, these cylinders are easy to integrate in different kinds of applications. The CHF62 model is, to the opposite of the CH62 and CH50-40 model, equipped with spring return. All models can easily be equipped with different kinds of accessories.

Please note - for the hollow cylinder CH50-40, the capacity is given at maximum working pressure - 80 MPa (800 bar).

Options for quick couplings

All cylinders can be delivered with quick couplings of insert type - male ⁽¹⁾ or of screw model - female ⁽²⁾. When ordering cylinders with screw type coupling, put "P" at the end of the model (e.g. CFC1010P).

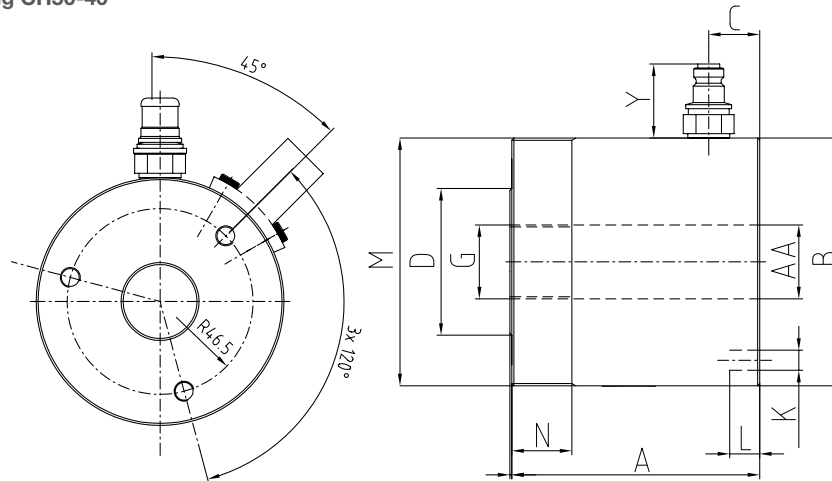




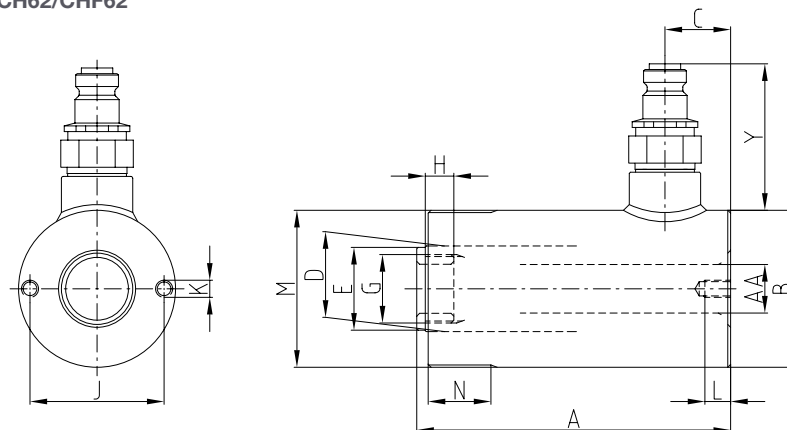
Technical data

Name	Working press. MPa	Capacity kN (t)	Stroke mm	Hole diam. mm	Stroke volume cm ³	Piston ø mm	Piston area cm ²	Diameter mm	Height mm	Weight kg
CH62	70	61 (6)	51	17	44.7	30	8.8	55	110	1.6
CHF62	70	61 (6)	51	17	44.7	30	8.8	55	136	2
CH50-40	80	500 (51)	40	37	260	74	62.6	124	124	9.2

Dimensional drawing CH50-40



Dimensional drawing CH62/CHF62



CH 62; CHF 62

Name	Capacity kN (t)	A mm	B ø mm	C mm	D ø mm	E ø mm	G	H mm	J mm	K	L mm	M	N mm	Y mm	AA ø mm
CH62	61 (6)	110	55	22	30	29	M24x1,5	10	47	M6	9	M55x1,5	22	54	17
CHF62	61 (6)	136	55	22	30	29	M24x1,5	10	47	M6	9	M55x1,5	22	54	17
CH50-40	500 (51)	124	124	25.5	74	-	UNC1 3/8"-6	-	-	M10	15	M125x3	30	37	37



www.nikehydraulics.com

NIKE HYDRAULICS AB
 Box 1107
 631 80 Eskilstuna
 SWEDEN
 Tel +46 16 - 16 82 00
 Fax +46 16 - 13 93 16
 info@nikehydraulics.se

NIKE HYDRAULICS Inc.
 3980 W. Albany, Unit #1
 MCHENRY, IL 60050
 USA
 Tel + 1 815 385 7777
 Fax + 1 815 385 7776
 info@nikehydraulics.com

NIKE POWER EQUIPMENT Ltd.
 Unit 6, Stechford Trading Estate
 Lyndon Road, Stechford
 BIRMINGHAM B33 8BU, UK
 Tel +44 121 789 77 07
 Fax +44 121 789 68 66
 info@nikehydraulics.co.uk